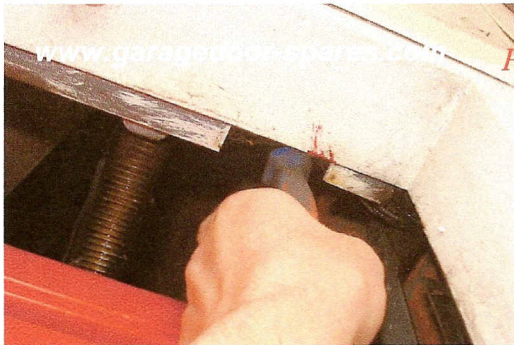


Fitting Instructions for a Garador, Westland & Catnic Garage Door Spring Box Roller Wheels & Wall Bracket & Link Arm



These instructions cover, how to replace a Spring Box Assembly to a
Garador, Westland & Catnic Garage Door.
If you have a broken spring or cable and your garage door is more than
15 years old, please consider replacing the the whole Spring Box.
This will save time and money in the future!

Picture 1



Please Note:

*If your spring box has **no** sliding plastic cover on the front,
Please cut any existing cables that are under tension from the outside of the
garage before you commence!*

Safety Note

*If you have a metal cover to the front of your spring box,
Please do not carry out any work to it, these boxes are now obsolete
and are **very dangerous** to work on!!
You will require a new Spring Box Assembly.*

The new spring box comes complete with 2 x springs (pre-tensioned) 2 x cables, fixing bolts & bracket
Tools needed: 10mm socket wrench, screw drivers, hammer, oil, wire cutters Fitting Time: 1 hour

Picture 2



A broken cable or spring will usually result in the spring hanging down the back of the garage door.

Step 1.

Cut any existing cable that is still attached or under tension.

Picture 3



Step 2.

**You can now remove the old spring box, undo the 2 fixing screws,
one each side of the spring box.**

Lift the old spring box off the middle locking support bracket.

Picture 4



Please Note:

Please check the wall bracket pulley wheel, if the wheel is damaged as (picture 4) the link arm and wall bracket will need to be replaced.

Please do not attempt to fit a new cable to a damaged wheel!!

Picture 5

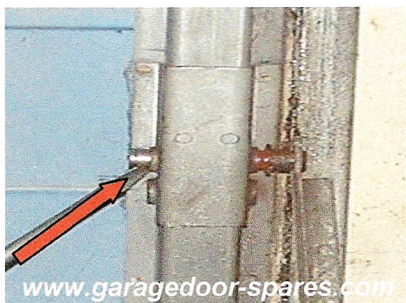


Step 3.

Replacing the wall bracket & link arm assembly, take out the 3 fixing screws to the wall bracket, and the circlips that hold the link arm in place. (picture 6)

New Lin Arm

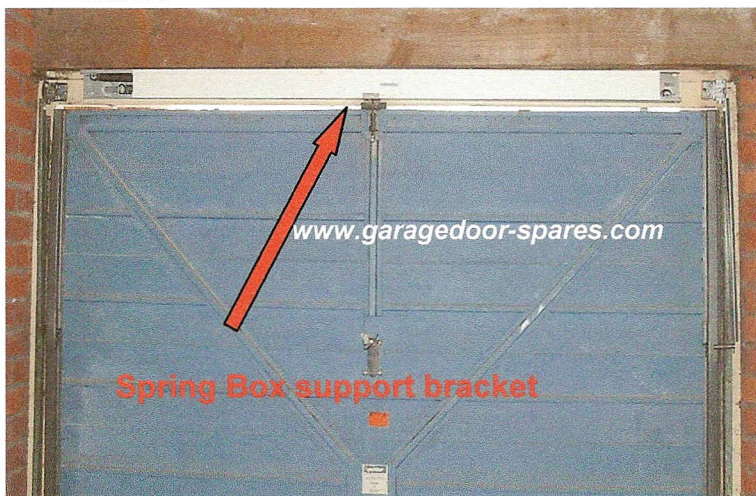
Picture 6



Step 4.

Replace the new wall bracket & link arm with 3 screws, do not re-engage the link arm pivot arm yet! by leaving this disconnected at this stage makes the cable fitting easier later!

Picture 7



Step 5.

Replace the middle spring support bracket. Place the new spring box into position as picture 7, making sure the spring box is horizontal and central.

The lock latch should fit into the lock hole on the underside of the spring box.

Picture 8



Step 7.

Fix the new spring box to the frame with the 2 x coach bolts. (10mm socket)

Picture 9



Step 8.

Remove the screw that retains the Roller Spindle track in place. (flat head screwdriver)

Picture 10



Step 9.

Check the Spindles, if the spindles are badly worn they will need replacing at this stage!

The little black roller wheel may be missing from the spindle, as picture 10.

If the spindles are ok, just replace the roller wheels!

N.B. I always replace the Roller Wheels regardless, this makes sure that the door operates smoothly.

Picture 11



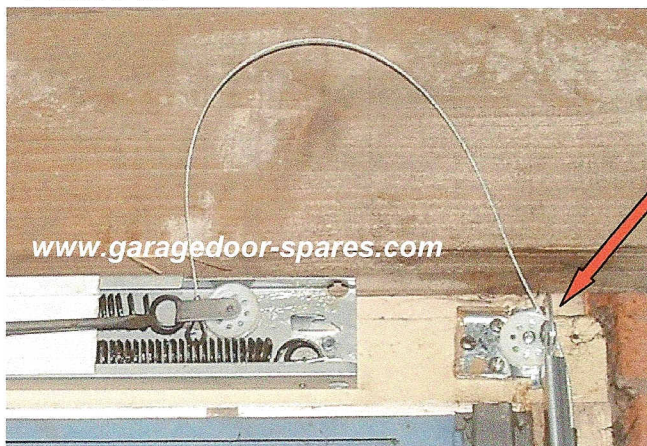
Step 10.

Replace the roller wheel and oil make sure they are running freely!

Clean the tracks from any grease and dirt, replace the track fixing screw.

Do not GREASE the tracks and the new roller wheels!

Picture 12



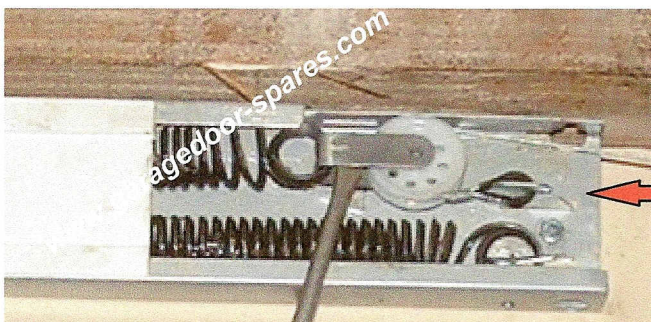
Step 11.
Fitting the New Cables
Thread the new cable through the wall bracket

Picture 13



Step 12.
Squeeze push the end of the cable through the spring pulley wheel assembly

Picture 14



Step 13.
Hook the end of the cable onto the anchor point.

Picture 15



Step 14
Hook the end of the cable onto the roller spindle U Bracket on the spindle.

Picture 16



Step 15

Releasing tension onto the springs

Apply tension by pulling the cable across the garage door (picture 16)

Making sure that the cable is fixed securely at the anchor points, and that the cable is running in the pulley wheels.

Please Note:

When releasing the tension onto the springs, I always remove the link arm as picture 6, this allows the cable to be pulled cleanly across the door without any obstruction!

Picture 17 **Transit Anchor Bracket**



Step 16

Pull the cable (2") until the spring is pulled clear of its transit anchor bracket.

(The transit anchor bracket is located behind the spring pulley wheel)

Once you have re-leased the spring from its transit anchor point, you will feel the tension will be on the cable!

Use a screwdriver to guide the spring away from the anchor point. (picture 17)

Start to slowly guide the cable into the vertical track.

Make sure that the new cable is clear of any obstructions!

Replace the Link Arm back into position and secure with the circlip or split pin.

Step 15

Repeat the same process to fit the left hand side cable.

GARADOR

Check List

- Make sure you have replaced the screws to the tracks, the circlips to the link arms.
- Make sure the cables are free and clear from any part of the door.
- Oil all parts with a light oil, **Do not GREASE!**
- Slowly lift the door
- Make any necessary adjustments

The New Spring Box Fitted



Safety Note

Please read the instructions carefully before you commence any work.

All work is carried out from inside the garage.

Please make sure you have all the tools and parts necessary to complete the work once inside.

If you have any doubts, please ask a qualified person,
or e-mail richard@garagedoor-repairs.co.uk

All work is under taken at your own risk!

www.garagedoor-spares.com

Copyright © 2008